

Area A GIS Project

Tom Clemo
Deputy Chief of Operations
Santa Monica Fire Dept.

Area A GIS Project

Chartered by the Fire Operations Chiefs of Area A

Representing the Cities in CAL OES Region I

Culver City
Santa Monica
Beverly Hills

Mission Statement:

“To get the right resource, to the right place at the right time – regardless of the patch on the sleeve or sticker on the door.”

Region I Counties

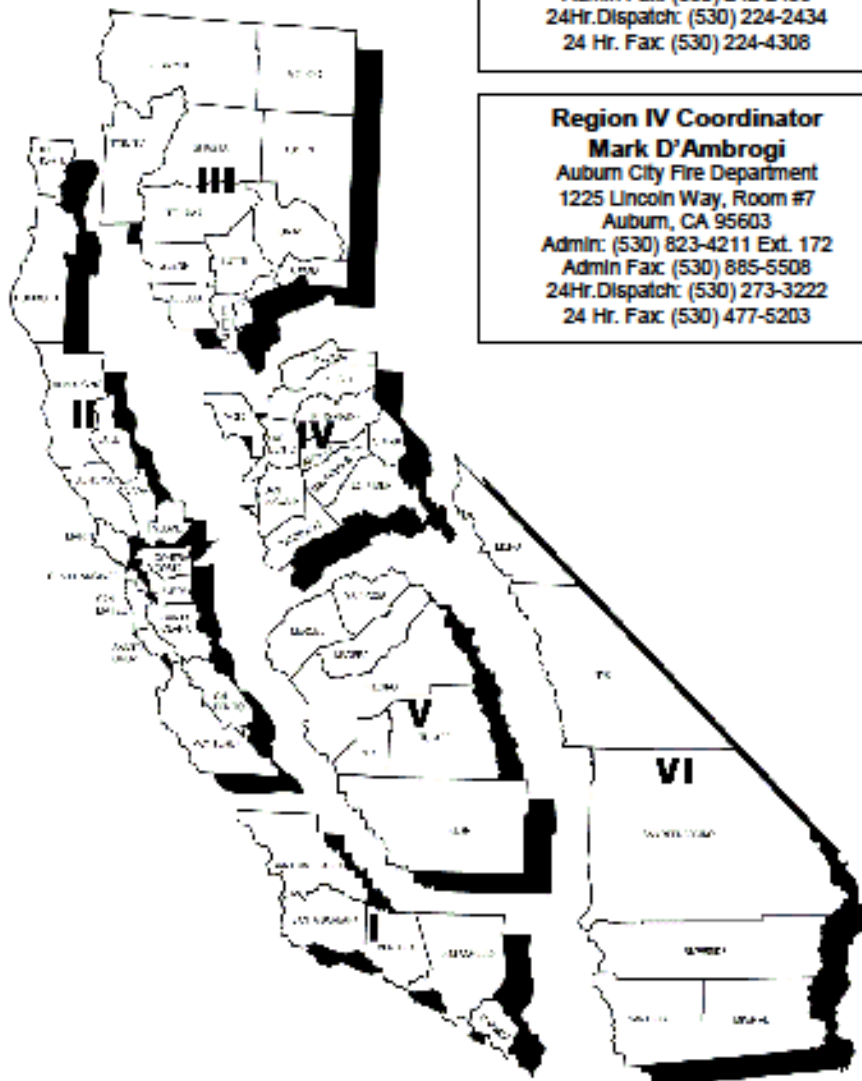
Los Angeles

San Luis

Santa Barbara

Ventura

Orange



Region II Coordinator
Doug Williams
Alameda County Fire Department
835 E. 14th Street
San Leandro, CA 94577
Admin: (510) 618-3490
Admin Fax: (510) 618-3445
24 Hr. Dispatch: (925) 245-0420
24 Hr. Fax: (925) 422-5730

Region I Coordinator
Daryl Osby
Los Angeles County Fire Department
1320 N. Eastern Avenue
Los Angeles, CA 90063-3294
Admin: (323) 881-2401
Admin Fax: (323) 265-9948
24 Hr. Dispatch: (323) 881-2455
24 Hr. Fax: (323) 266-6925

Reading, CA 95062
Admin: (530) 224-2462
Admin Fax: (530) 242-2496
24Hr. Dispatch: (530) 224-2434
24 Hr. Fax: (530) 224-4308

Region IV Coordinator
Mark D'Ambrogi
Auburn City Fire Department
1225 Lincoln Way, Room #7
Auburn, CA 95603
Admin: (530) 823-4211 Ext. 172
Admin Fax: (530) 885-5508
24Hr. Dispatch: (530) 273-3222
24 Hr. Fax: (530) 477-5203

Reading, CA 95062
Fire & Rescue Division: (916) 845-8396
Nights & Weekends: (916) 845-8396
FAX: (916) 845-8396

State Fire and Rescue Council

Kim Zagaris
kim.zagaris@calema.ca.gov

FIRE OPERATIONS

Deputy Chief – Brian Woodbeck
brian.woodbeck@calema.ca.gov

FLEET OPERATIONS

Deputy Chief – Steve Hart
stephen.hart@calema.ca.gov

FIRE ADMINISTRATION

Deputy Chief – Bob Wyman
bob.wyman@calema.ca.gov

SPECIAL OPERATIONS

Deputy Chief – Lorenzo Gigliotti
lorenzo.gigliotti@calema.ca.gov

Assistant Chief – Len Chesmore
len.chesmore@calema.ca.gov

Assistant Chief – Joe Gear
joe.gear@calema.ca.gov

FIREScope

Deputy Chief – Ralph Domanski – R
ralph.domanski@calema.ca.gov

Assistant Chief – Mike Lococo – R
mike.lococo@calema.ca.gov

HAZ-MAT

Deputy Chief – Vacant

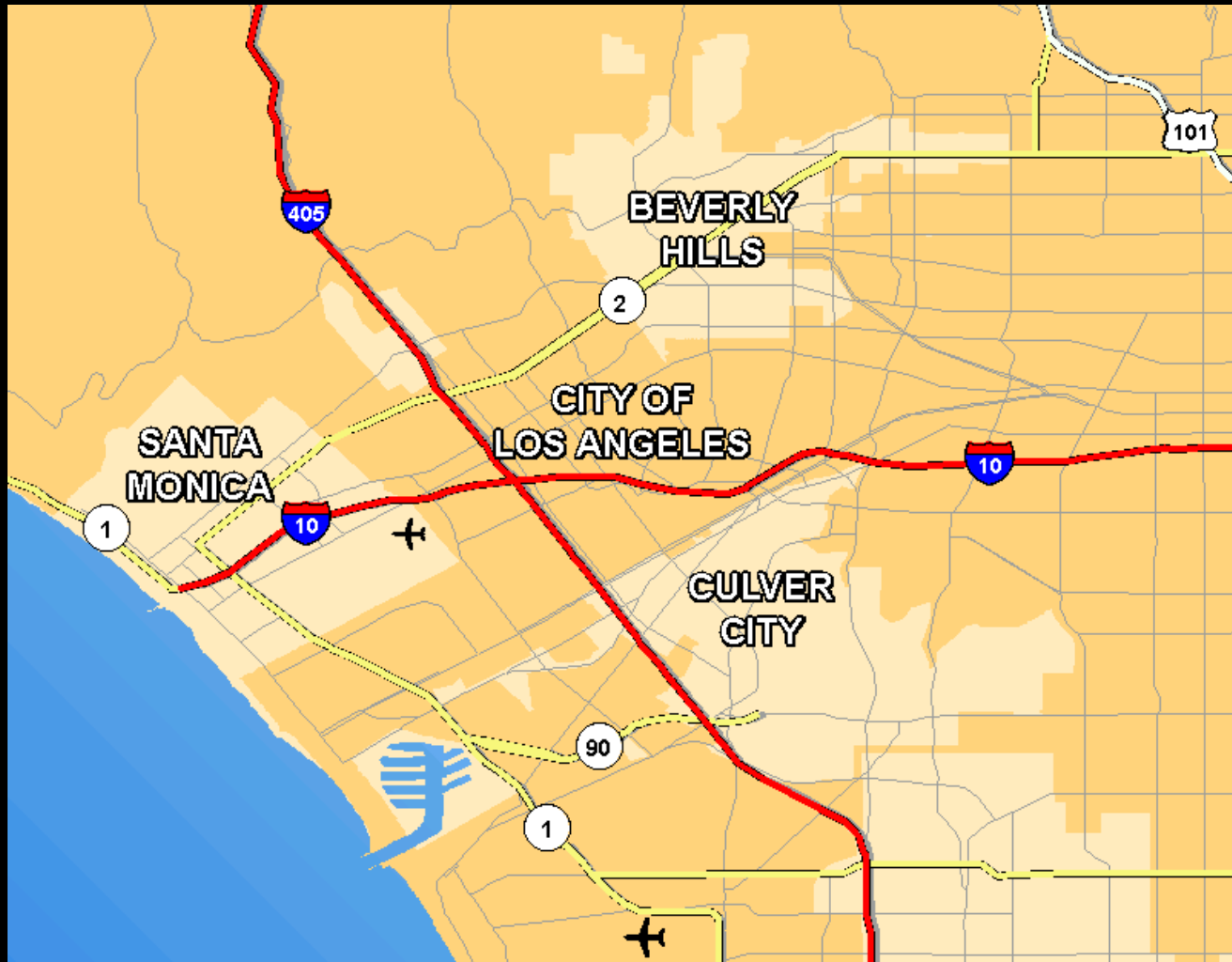
Region V Coordinator

Keith Larkin
Fresno County Fire Protection District
210 S Academy Avenue
Sanger, CA 93657
Admin: (559) 493-4300 / Fax: (559) 879-2922
24 Hr. Dispatch: (559) 292-5277
24 Hr. Fax: (559) 292-0368

Region VI Coordinator

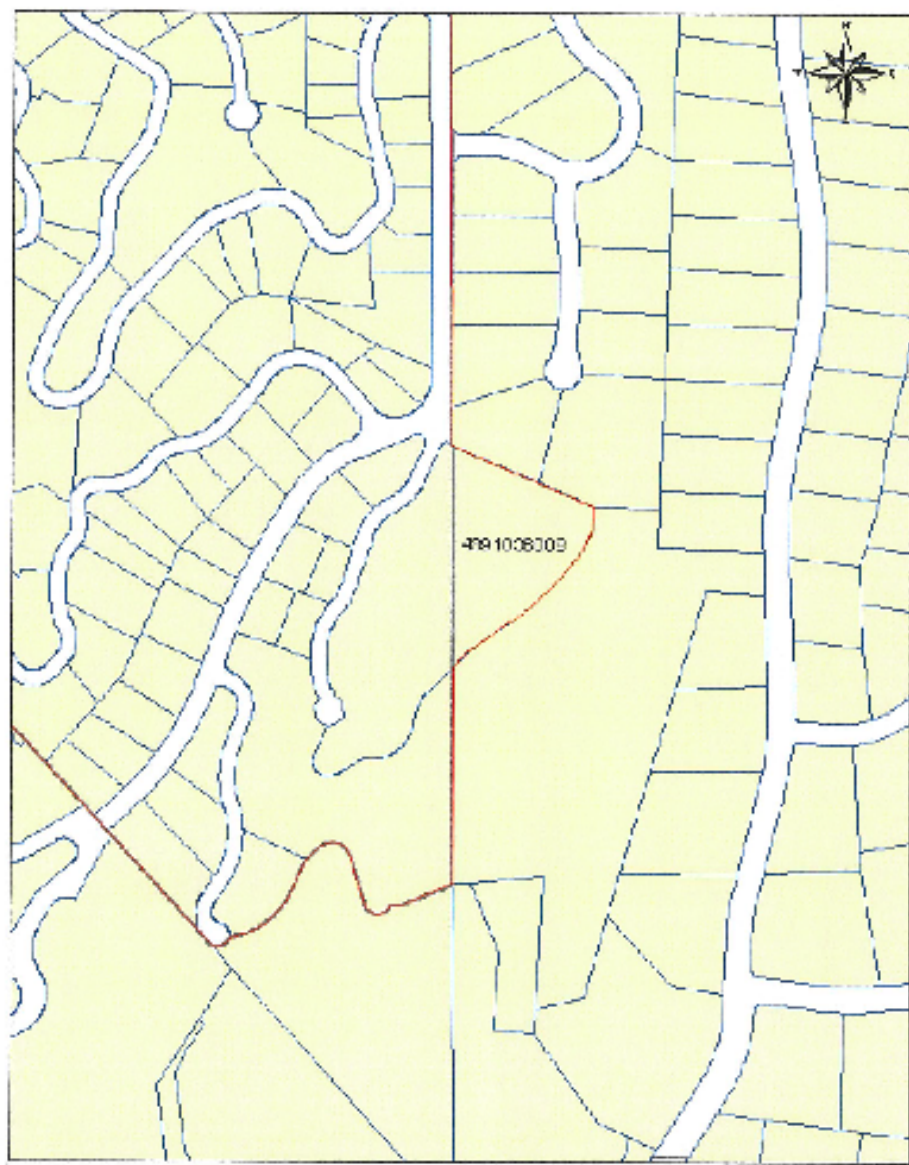
Dale Hutchinson
CALFIRE Southern Region Operations
2524 Mulberry Street
Riverside, CA 92501
Admin: (951) 320-6200
Admin Fax: (951) 320-6395

Area A – Westside Cities






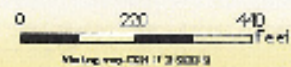
What we know...

- ▣ We all rely on GIS data to dispatch
- ▣ Technology is moving rapidly towards GIS Data and point based dispatching
- ▣ All Area A cities have ESRI Platforms, just different data schemas
- ▣ 2 of the 3 of us have the same Computer Aided Dispatch (CAD) systems
- ▣ LA City borders all of our cities and is replacing their CAD system
- ▣ Mutual and automatic Aid agreements allow the sharing of resources
- ▣ We have significant border issues and discrepancies
- ▣ This is a technical problem we can fix!

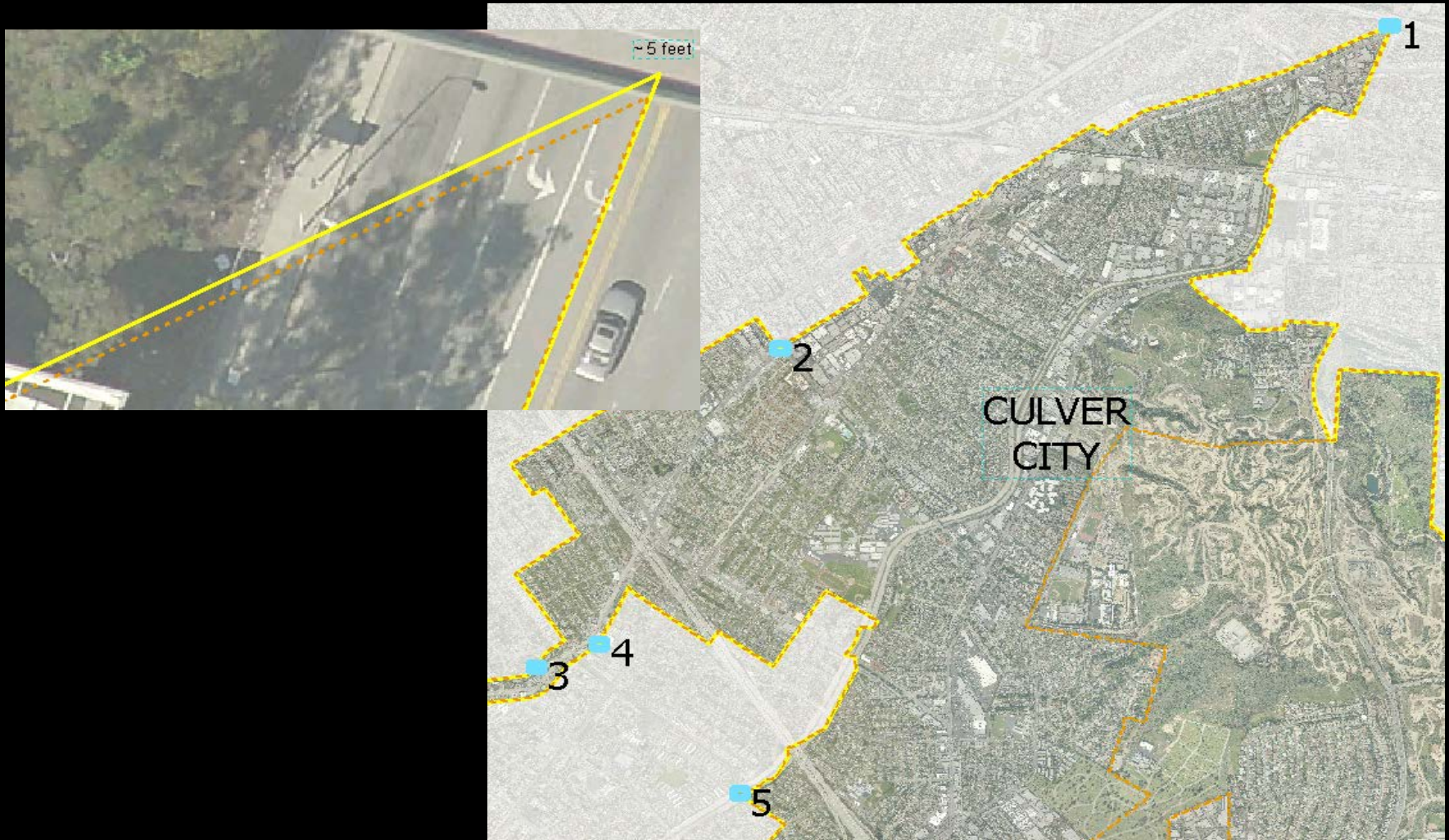


Discrepancy between LAFD and CBH municipal boundary

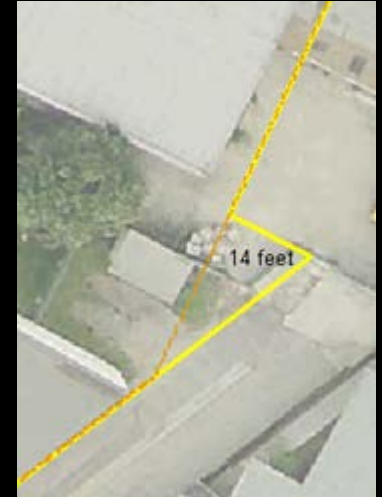
-  Beverly Hills Official Boundary
-  LA Official Boundary (Per LAFD)
-  Parcels



Boundary Comparisons



Boundary Comparisons



What we need to do...

- ▣ Analyze the borders and define the discrepancies between LA, BH, CC and SM – *DONE*
- ▣ Go city by city and assure the addresses on the borders are routed to the correct dispatch center – *DONE* in BH and partially in CC
- ▣ Develop strategies to meet the mission – *In Progress*
 - Participate in the LA City CAD project
 - Develop common CAD interop standards
 - Share GIS data and have a common schema
 - Work towards a CAD interop solution (NCR CAD Project)
 - Realign the borders