

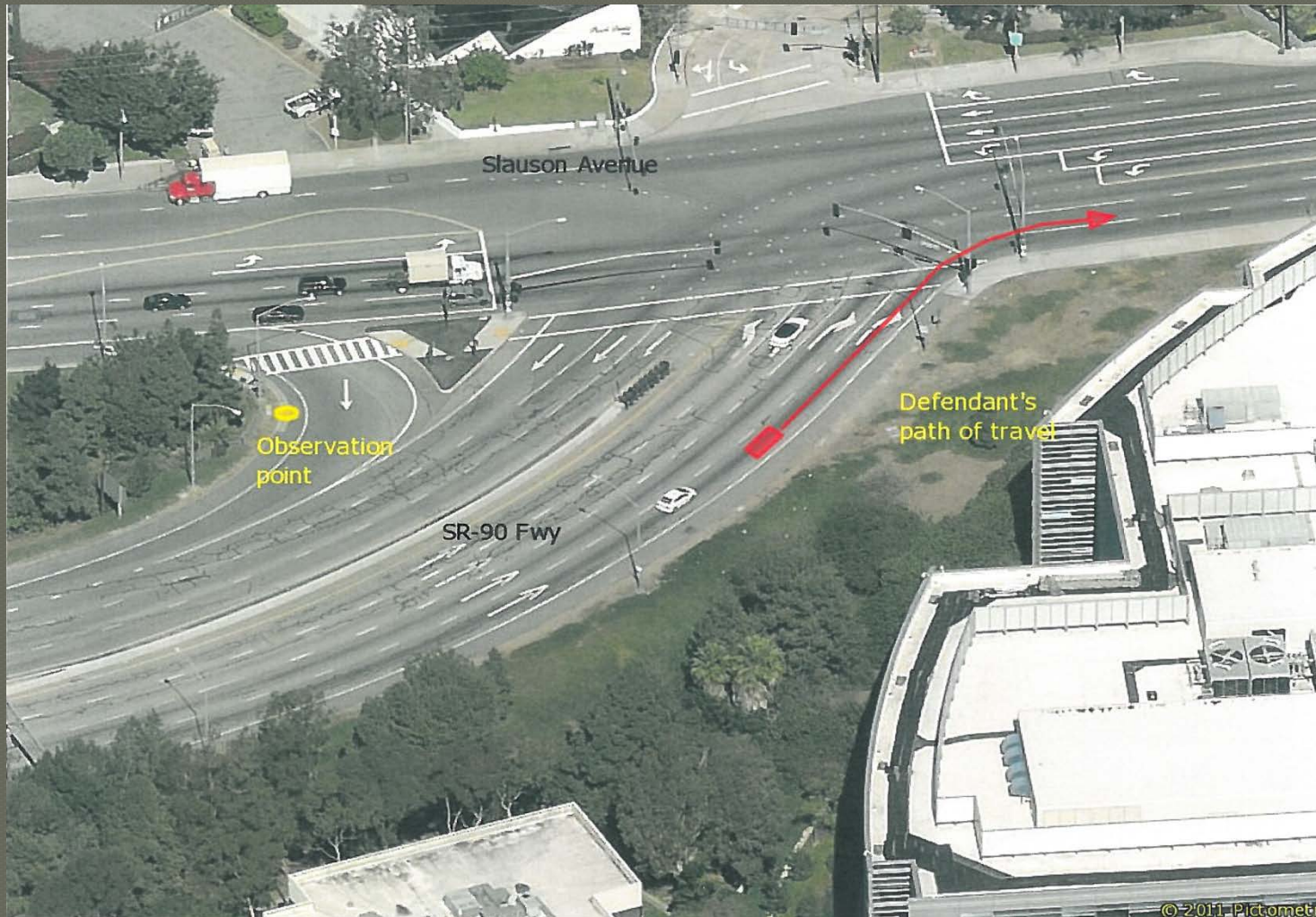
Culver City Police Department Traffic Bureau GIS

May 09, 2013

Investigator Kirk Newman

Trial by Written Declaration: Defendants request a trial by written statements.

Officers use Pictometry to show the violator's movement and include where the officer was positioned when he observed the violation.



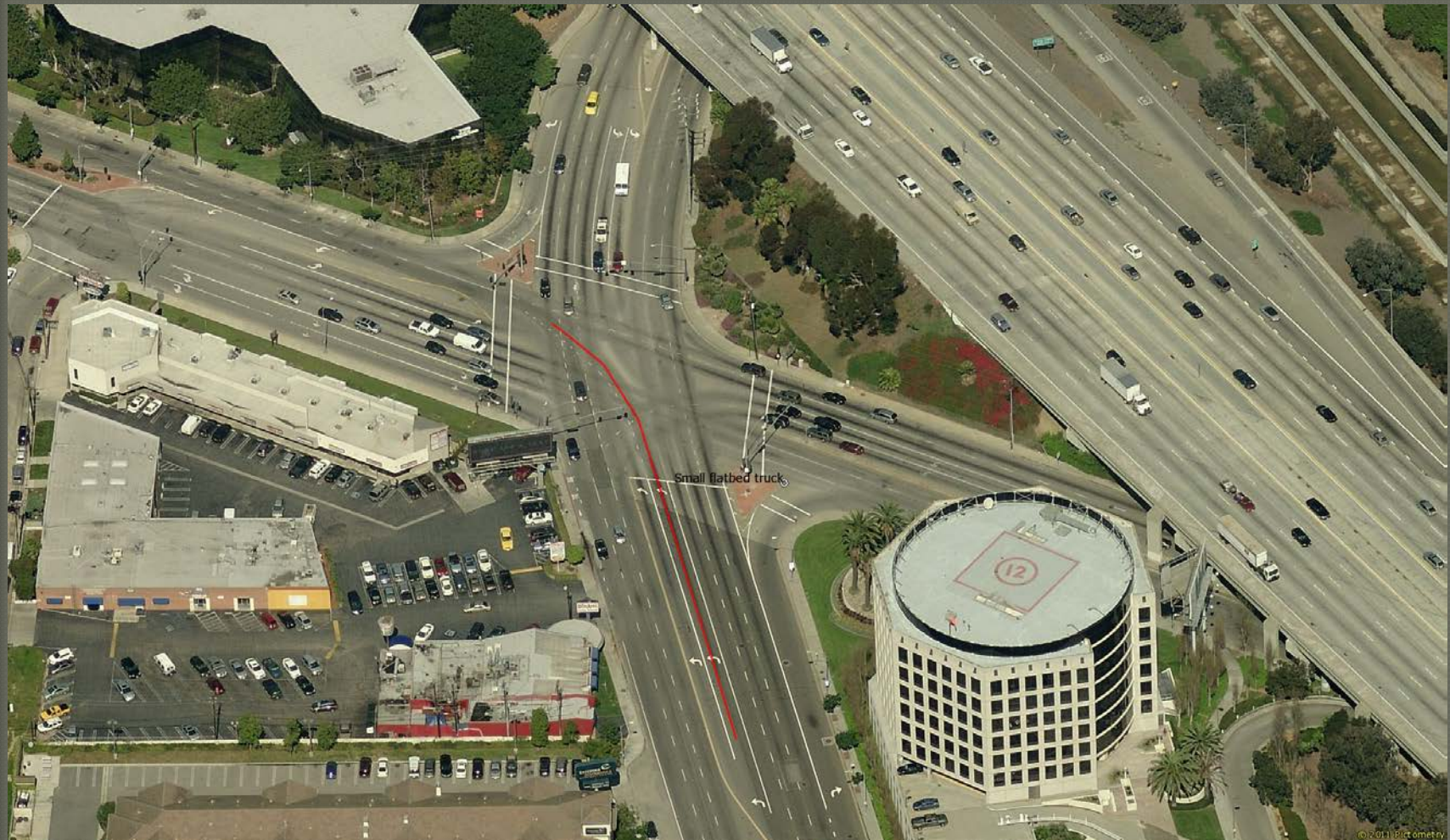
Trial by Written Declaration: Defendants request a trial by written statements.

“Photos from different dates have vehicles in different locations allowing the officer to make notes on the picture without drawing through cars in the picture. Having the option of different angles helps clarify the violation.” Motor Officer Loken CCPD.

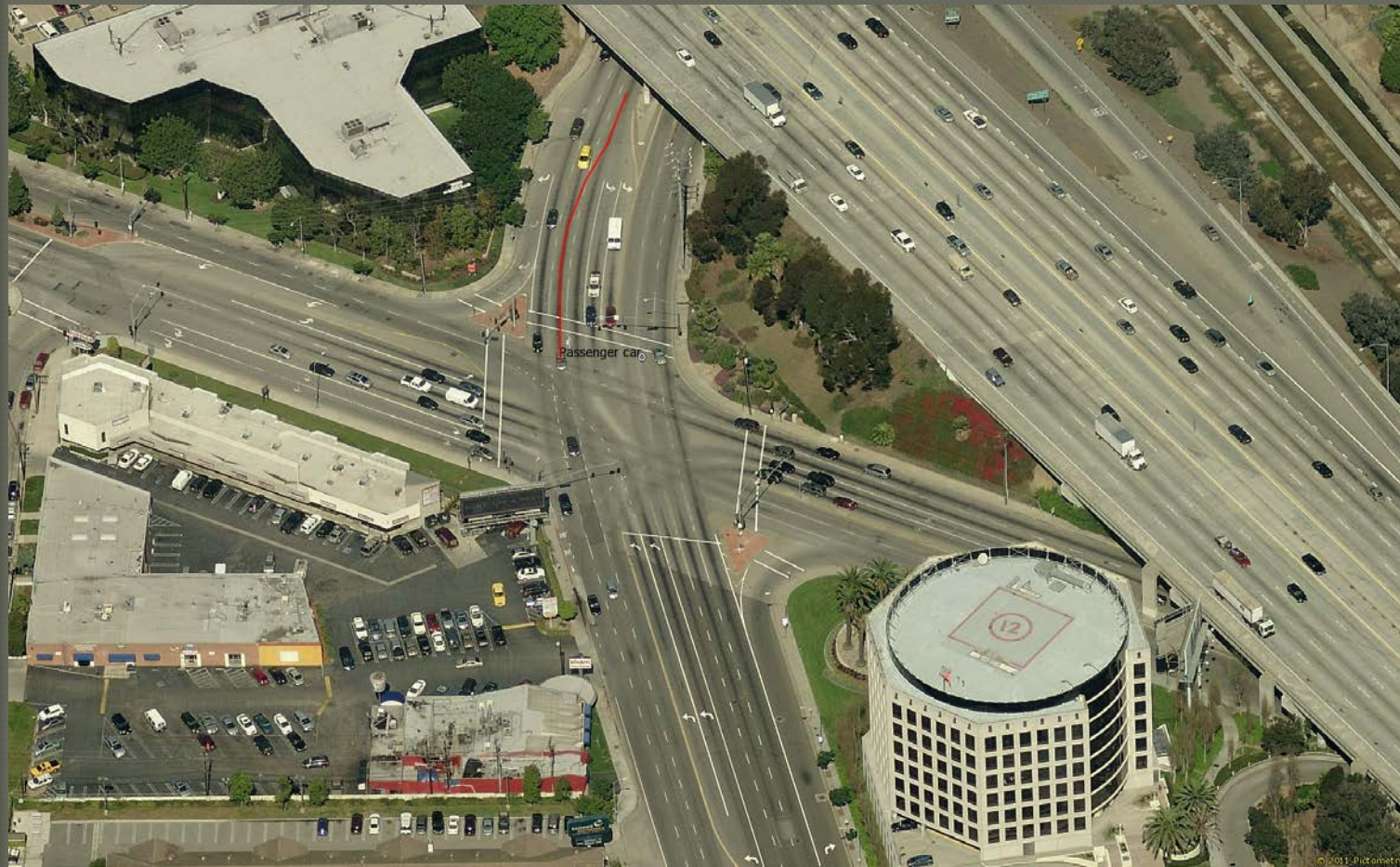


Sepulveda Boulevard and Centinela Avenue

Small flatbed truck was traveling northbound Sepulveda Boulevard and turning westbound onto westbound Centinela Avenue.



Passenger car traveling southbound in the number one lane approaches the intersection, sees a vehicle stopped for a red light in front of it. The driver changes lanes into the number two southbound lane.





The driver of the truck stated that they entered the intersection on a green arrow.

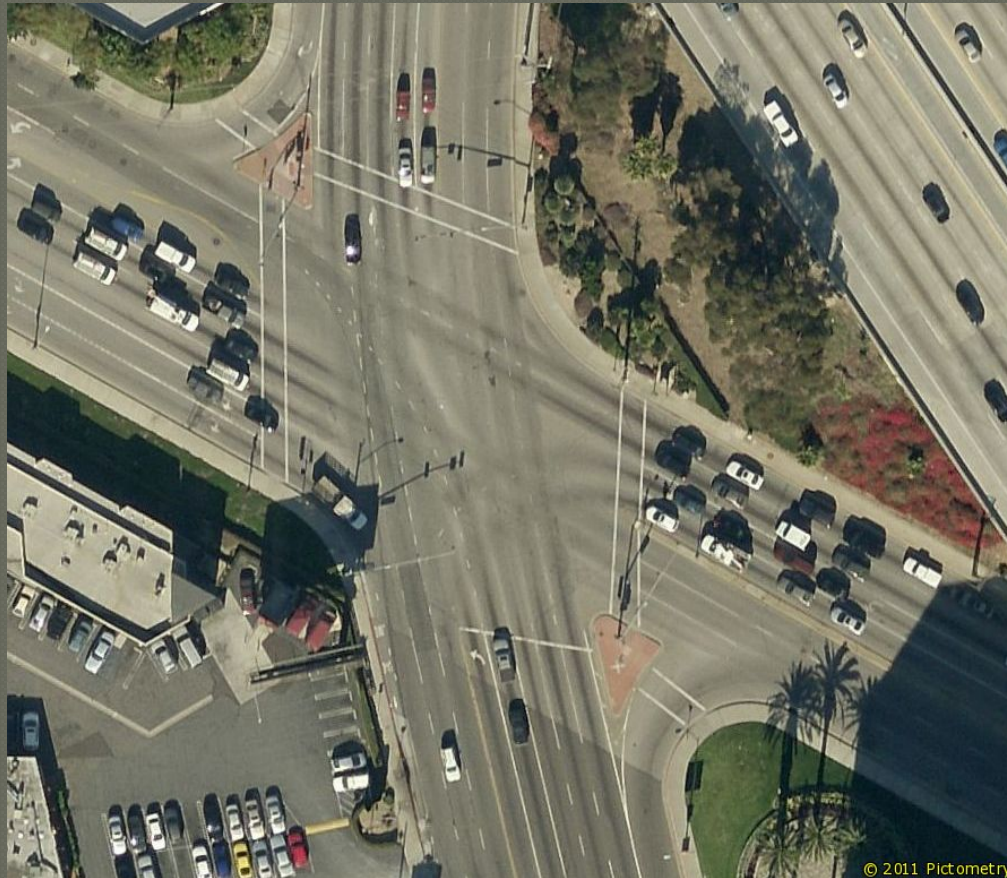
The driver claims that the car ran the red light.

The driver of the car stated that they slowed to about 25 MPH and before they reached the limit line the light changed from red to green. They entered the intersection and were hit broadside by the truck.

The driver claims that the truck ran the red light.



Using the scale image I measured the scene. It is 180 feet from the N/B left turn lane to the west crosswalk. The signal has a yellow phase of 3.6 seconds with an additional 1.3 second all red phase. $25 \text{ MPH} = 36.67 \text{ fps}$. In 4.9 seconds a vehicle would travel 180 feet. This indicates that the truck lawfully entered the intersection and the car must yield the right of way to the truck.



Mapping images have been used for strategic planning at special events such as the 4th of July fireworks display held at the Culver City High School.

Close up images
for the actual site



Map images to establish ingress and egress of the public and well as emergence routes and rally points.

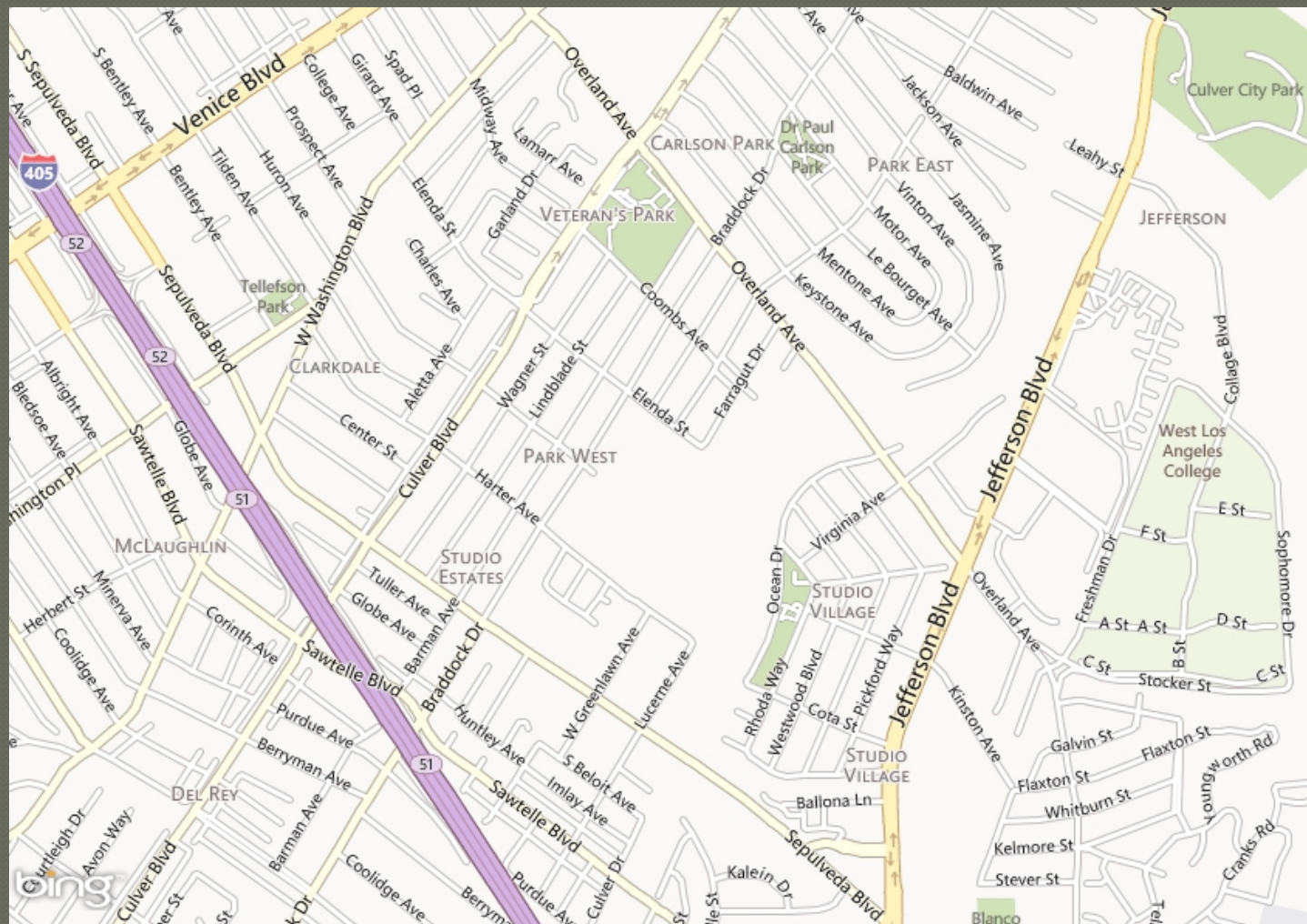


Photo Enforcement / Red Light Camera

With the scale photograph distance can be accurately measured. Adding time over distance the officer can prove that the radar was functioning correctly and that the seconds late equal the distance observed in the video.



Thank you for your time.

Questions?

Investigator Kirk Newman