



Culver City Fire Dept. GIS Uses

Captain Bill Heins



Where's Waldo?

Screenshot of the Pictometry Online 1.10.2 web application interface. The browser address bar shows the URL: <http://pol.pictometry.com/en-us/app/>. The application displays an aerial photograph of a park area with a large, curved road and a tall tower structure. A location label indicates: "Location: 34.01586, -118.383126 Degrees". The interface includes a workspace panel on the left with folders for Annotations, Bookmarks, and Layers (Address Points, Building Outlines (2008), City Boundaries). The Properties panel is empty. The Selections panel is also empty. The bottom status bar shows: "Location: 34.01586, -118.383126 Degrees" and "Date: 12/07/2011 | Level: Neighborhood | Scale: 75%".



Above Sea Level

Screenshot of the Pictometry Online 1.10.2 web application interface. The browser address bar shows the URL: <http://pol.pictometry.com/en-us/app/>. The application displays an aerial photograph of a landscape with a large antenna tower and two large circular structures. A label on the image indicates "Ground Elevation: 364.45 Feet". The interface includes a workspace panel on the left with a tree view showing "Workspace (Author)" containing "Annotations", "Bookmarks", and "Layers". The "Layers" section lists "Address Points", "Building Outlines (2008)", and "City Boundaries". The "Properties" panel is empty. The "Selections" panel is also empty. The top right of the application shows the user name "Bill Heins" and navigation links for "Convert", "Select", "Page", "Safety", and "Tools". The bottom of the interface displays the date "Date: 12/07/2011", the level "Level: Neighborhood", and the scale "Scale: 75%".



How Tall?

Screenshot of the Pictometry Online 1.10.2 web application interface. The browser address bar shows the URL: <http://pol.pictometry.com/en-us/app/>. The application title is "Pictometry Online 1.10.2". The user is logged in as "Bill Heins".

The main interface displays an aerial photograph of a landscape with a tall tower. A yellow line is drawn vertically along the tower, and a label indicates its height: "Height: 270.33 Feet".

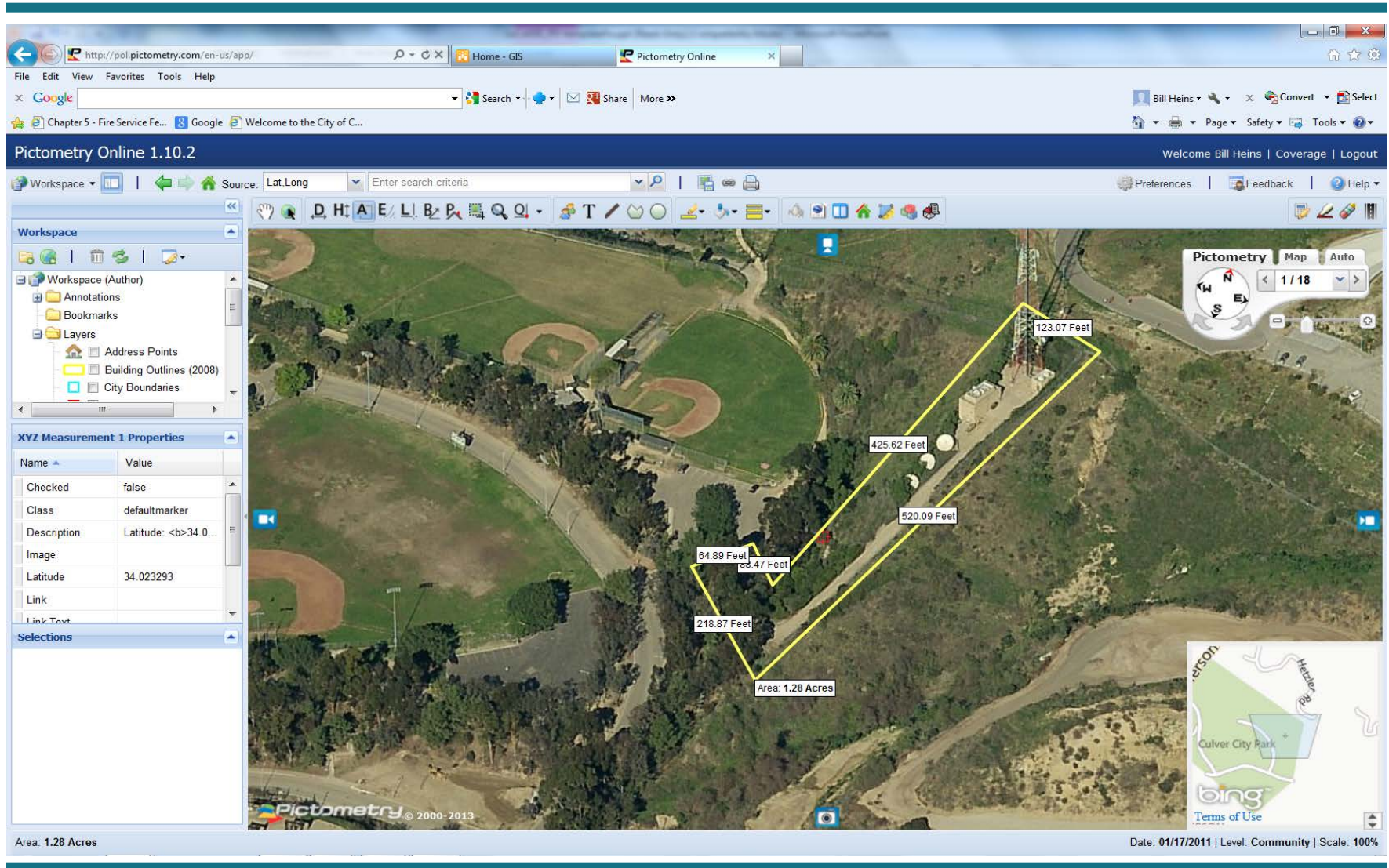
The left sidebar contains the following sections:

- Workspace:** Includes a tree view with "Workspace (Author)" containing "Annotations", "Bookmarks", and "Layers". The "Layers" section lists "Address Points", "Building Outlines (2008)", and "City Boundaries".
- Properties:** A table with columns "Name" and "Value".
- Selections:** A list of selected items.

The bottom status bar displays: "Height: 270.33 Feet" on the left and "Date: 12/07/2011 | Level: Neighborhood | Scale: 100%" on the right.

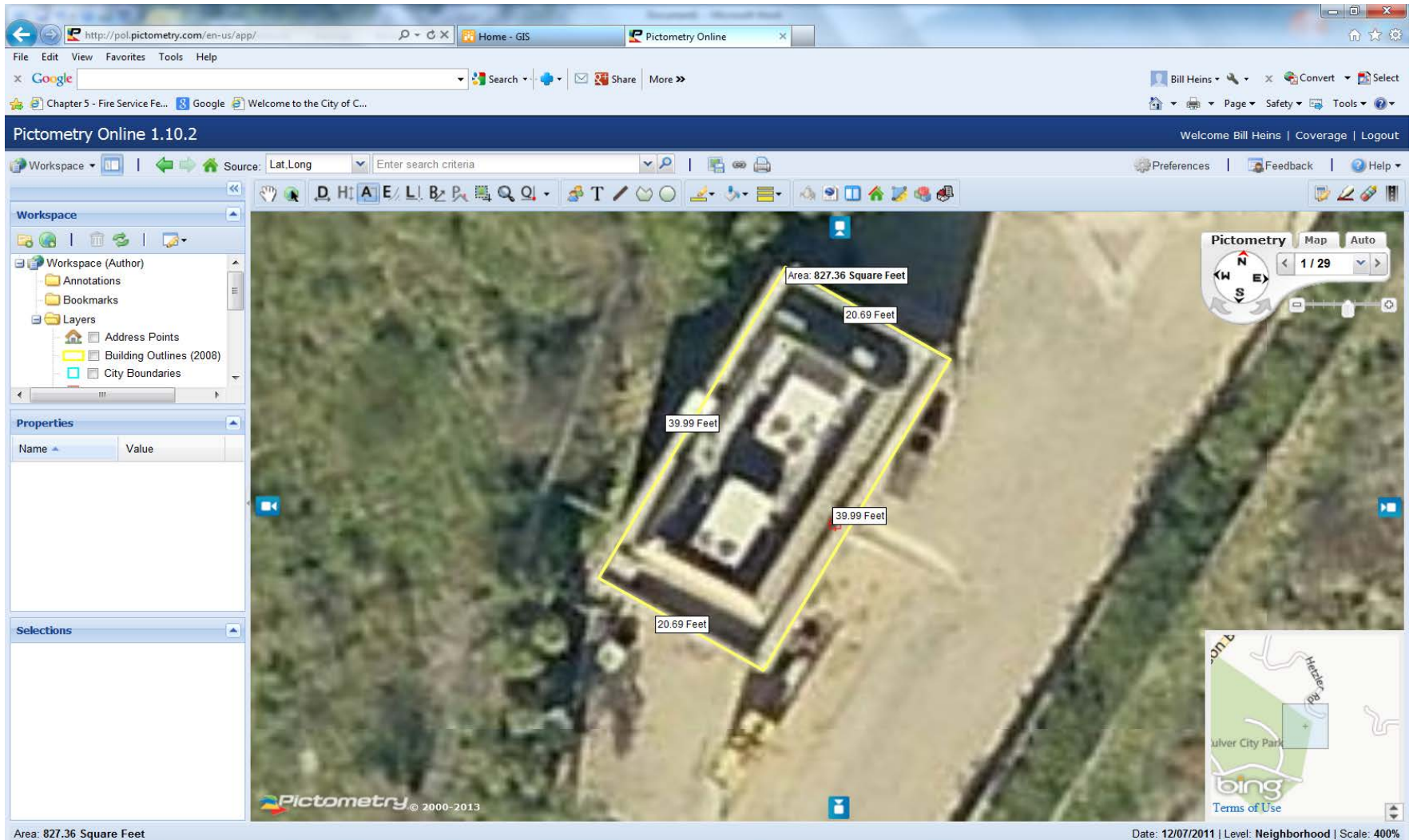


Brush Clearance





We Have a New Radio Building





How Tall?

Screenshot of the Pictometry Online 1.10.2 web application interface. The browser address bar shows the URL: <http://pol.pictometry.com/en-us/app/>. The application title is "Pictometry Online 1.10.2".

The interface includes a workspace area on the left with a tree view showing "Workspace (Author)" containing "Annotations", "Bookmarks", and "Layers". The "Layers" list includes "Address Points", "Building Outlines (2008)", and "City Boundaries". Below this is a "Properties" table with columns "Name" and "Value", and a "Selections" section.

The main display area shows an aerial photograph of a building complex. A yellow line indicates the height of a building, labeled "Height: 44.85 Feet". The bottom left corner of the main display area shows "Pictometry © 2000-2013".

The bottom right corner of the main display area shows a map inset with labels for "DOWNTOWN CULVER CITY", "DOWNTOWN", "Van Buren Pl", "Irving Pl", "Bradlock Pl", "Lafayette Pl", and "Duqu". The Bing logo and "Terms of Use" link are also visible.

The bottom status bar displays: "Height: 44.85 Feet" on the left, and "Date: 02/27/2011 | Level: Neighborhood | Scale: 100%" on the right.



Will The Ladder Reach?

Screenshot of the Pictometry Online 1.10.2 web application interface. The browser address bar shows <http://pol.pictometry.com/en-us/app/>. The application displays an aerial view of a building complex in Culver City, with a yellow line indicating a measurement of 78.86 Feet. The interface includes a workspace panel on the left, a toolbar at the top, and a status bar at the bottom.

Workspace (Author)

- Annotations
- Bookmarks
- Layers
 - Address Points
 - Building Outlines (2008)
 - City Boundaries

XYZ Measurement 1 Properties

Name	Value
Checked	false
Class	defaultmarker
Description	Latitude: 34.0...
Image	
Latitude	34.023293
Link	
Link Text	

Selections

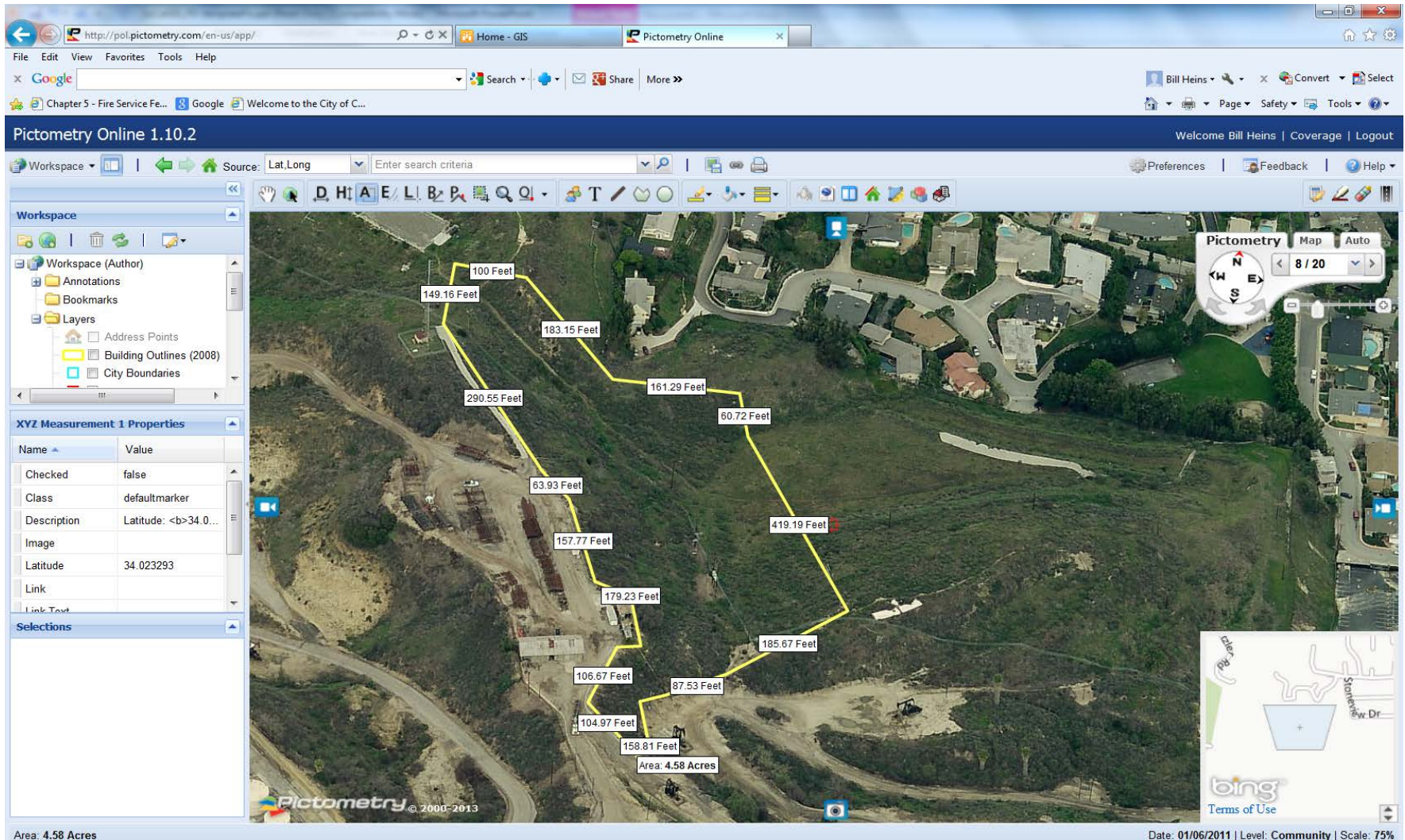
Distance: 78.86 Feet

Distance: 78.86 Feet

Date: 03/01/2011 | Level: Neighborhood | Scale: 150% | Date: 12/07/2011 | Level: Neighborhood | Orientation: North up Oblique

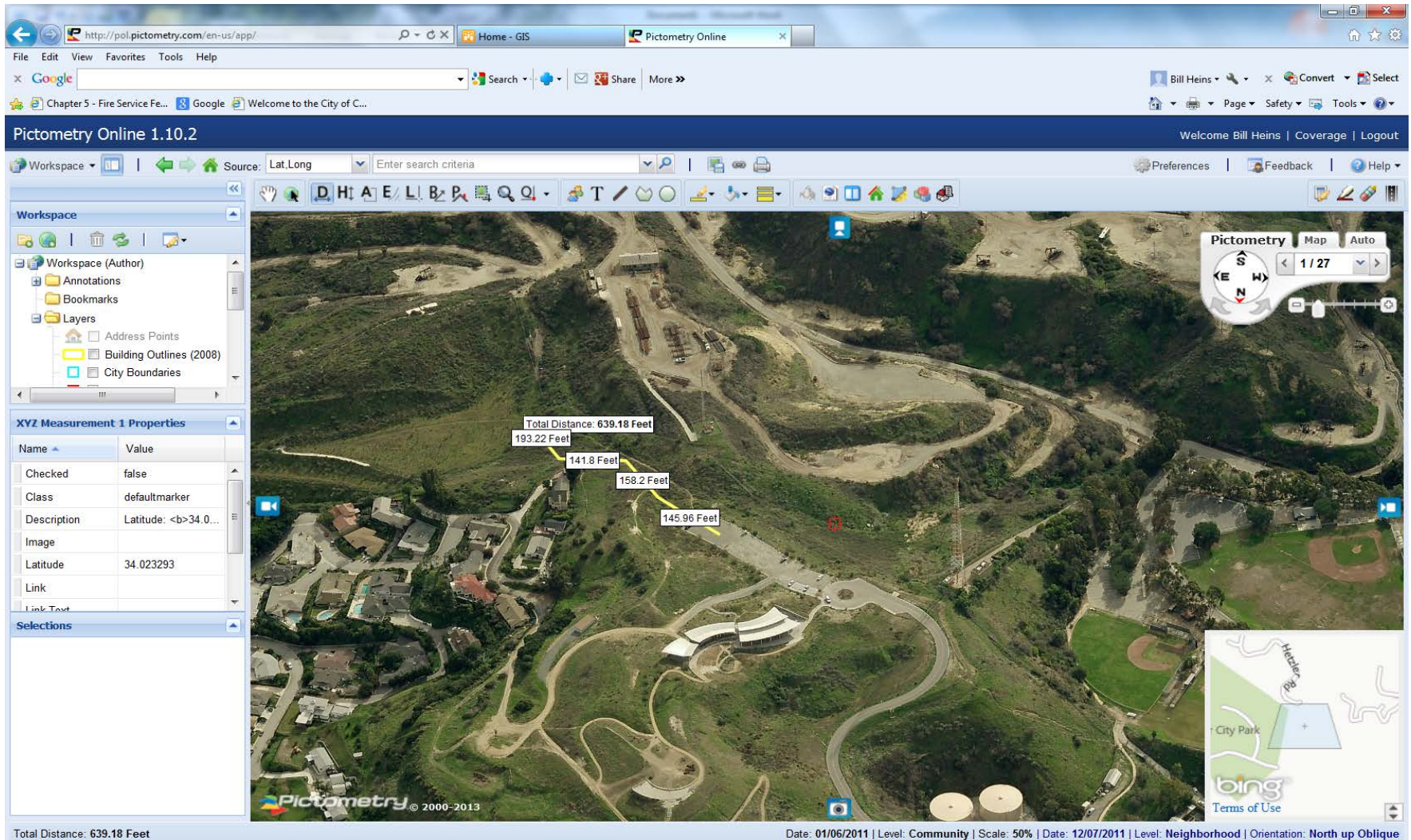


How Big Was The Fire?



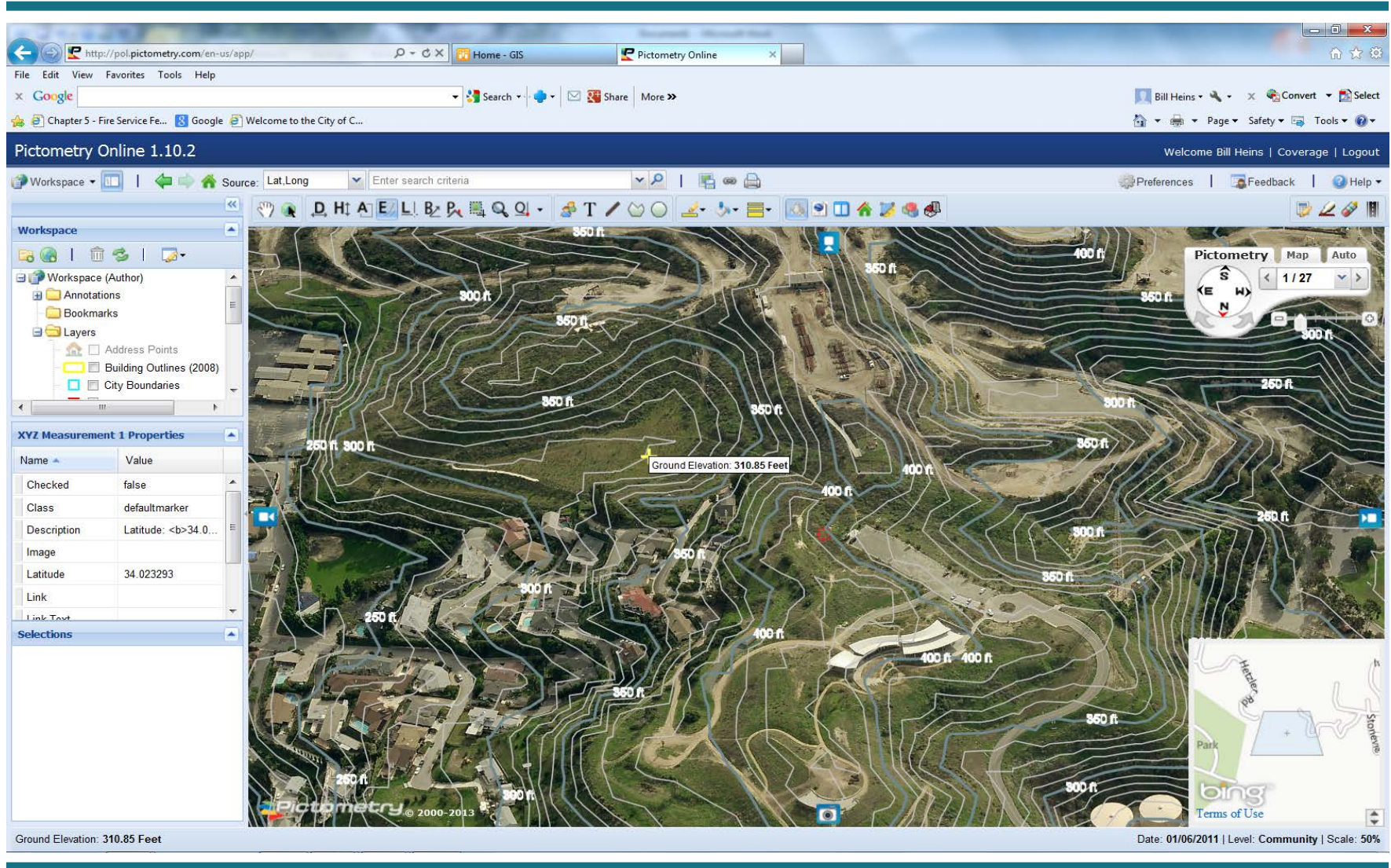


How Much Hose Did We Use?





Where Will The Fire Go?





How Long/Steep?

Screenshot of the Pictometry Online 1.10.2 interface showing an aerial view of a landscape with a yellow line indicating a measurement. The interface includes a workspace panel on the left, a toolbar at the top, and a status bar at the bottom.

Workspace (Author)

- Annotations
- Bookmarks
- Layers
 - ☐ Address Points
 - ☐ Building Outlines (2008)
 - ☐ City Boundaries

XYZ Measurement 1 Properties

Name	Value
Checked	false
Class	defaultmarker
Description	Latitude: 34.0...
Image	
Latitude	34.023293
Link	
Link Text	

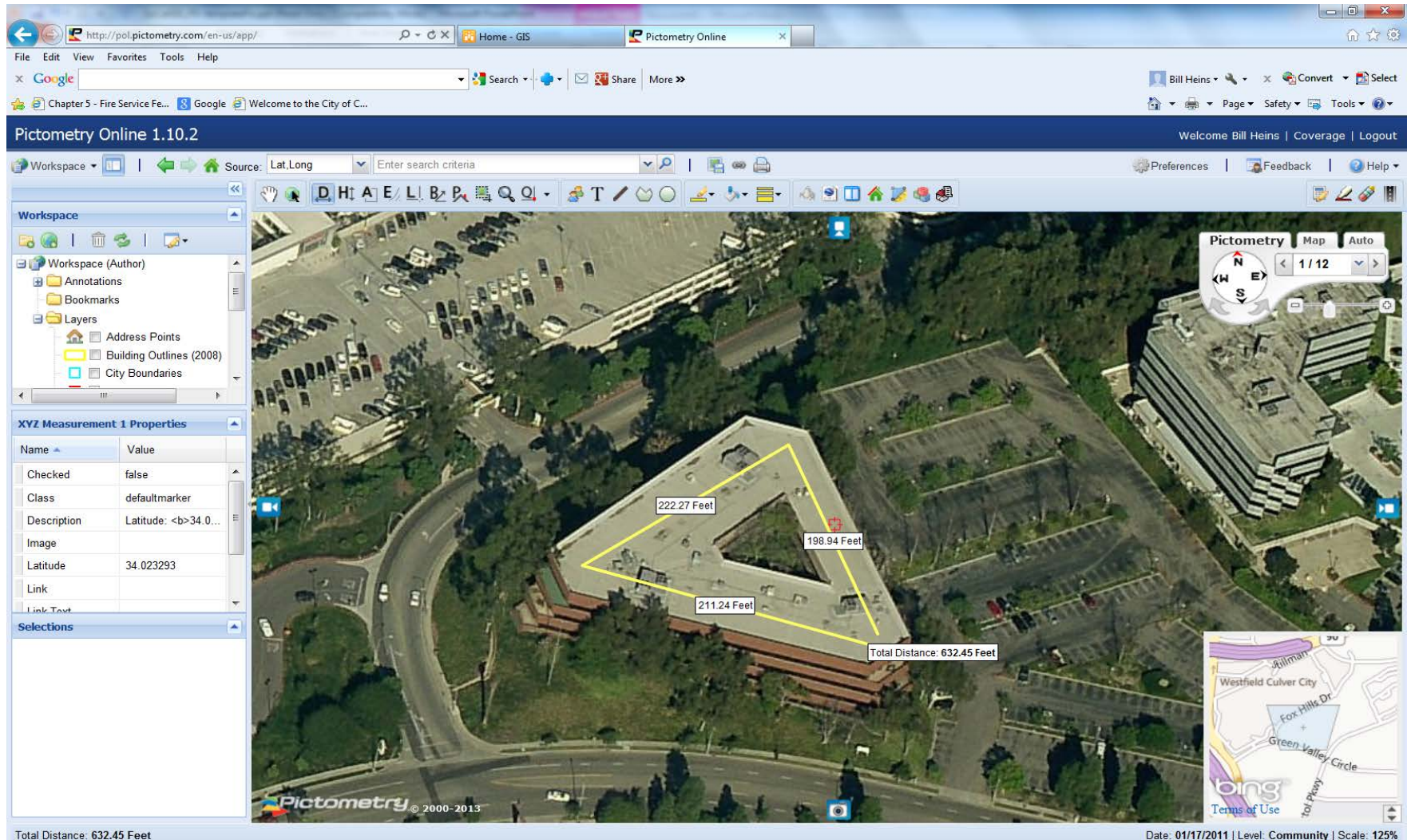
Selections

Ground Elevation: Difference 267.29 Feet Distance 821.24 Feet Grade 32.5%

Date: 01/06/2011 | Level: Community | Scale: 50%



How Much Hose?





3975 Overland Ave

9. Sprinkler & Standpipe F.D. Connections, Shut Offs: No





Culver City Fire Dept. GIS Uses

Captain Bill Heins